

Technical Settings:

As basis for this report, the Version 0.4.0-0ubuntu4 of Guidance was used, on a i386 machine with KDE 3.4.3 (Kunbuntu 5.10) was used.

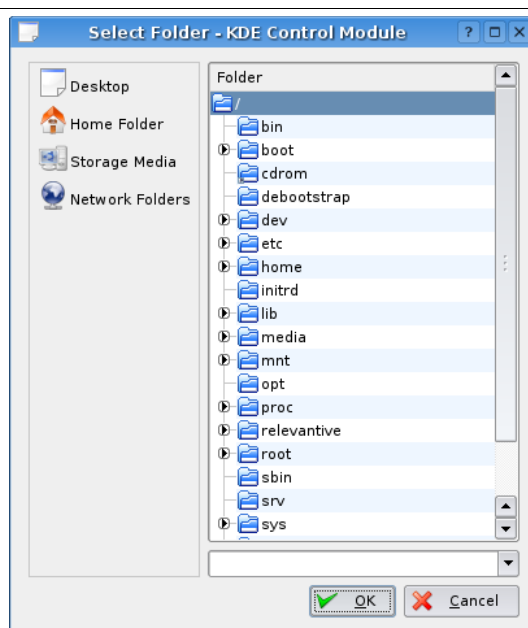
1. Mountconfig

1.1 Missing Administrator Mode if called stand-alone.

If mountconfig is launched without a framework (i.e. kcontrol), there is no information why everything is greyed out, there is no way to access an administrator mode.

1.2 Folder Button

On the way New→Browse, a „new folder“ button is missing to define a mount directory within the dialog.



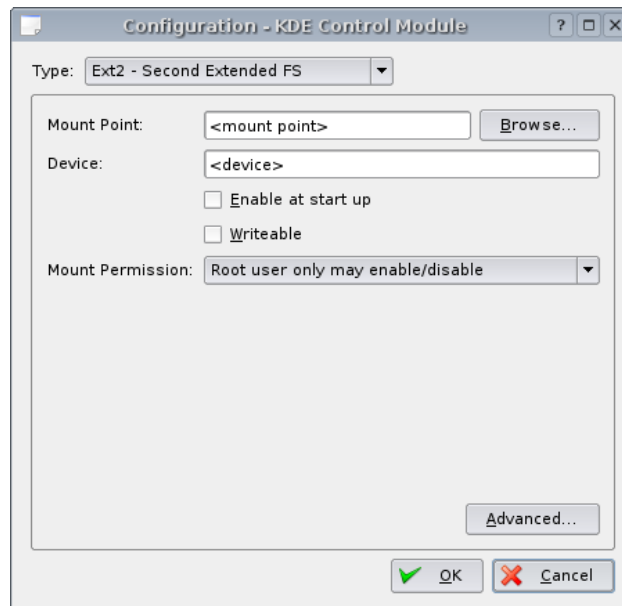
Pic: „New folder“ button is missing.

Recommendation

Add a „New folder“ button or use standard file dialog.

1.3 type: r+w

The mount options should per default be r+w. Since the error feedback when trying to write to a read only device is very poor and does not give a hint where the problem is, the user may not know what to do. Also, mounting a drive is generally expected to be a single user action with root or sudo privileges, not an administrated environment. Therefore, write access can be considered as the most frequent, thus default action.



Pic: „Writable“ should be checked per default.

Recommendation

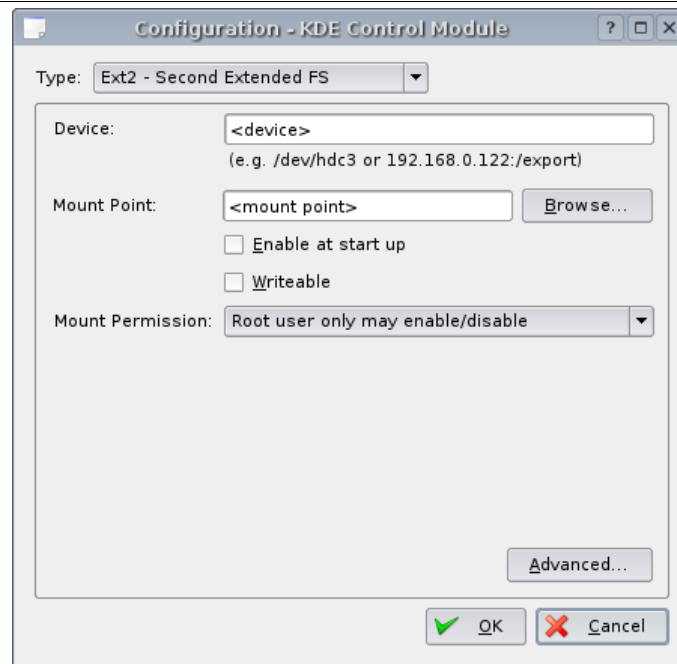
Make „Writable“ checked per default.

1.4 „Device“

Creating a new mounted device, the user has to enter the field „Device“. It is very likely that users do not know what to enter there.

Recommendation

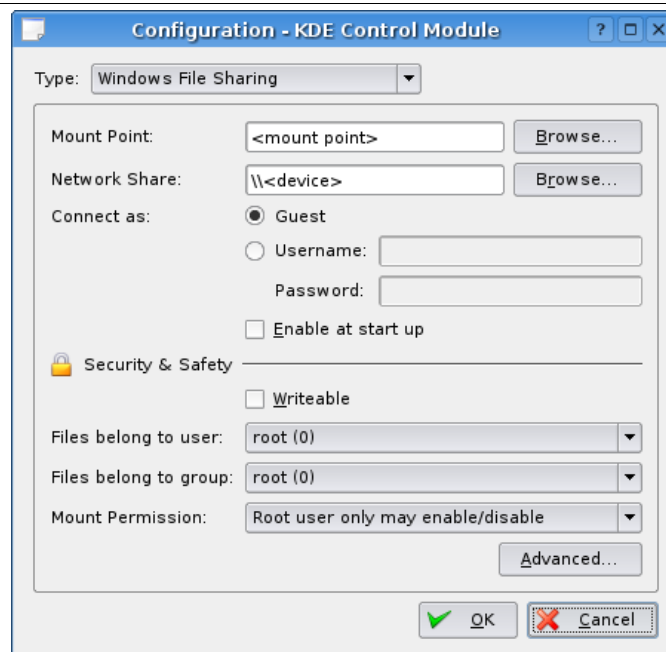
Give two examples, like 192.168.0.122:/export0 or /dev/hdc2. Make sure that the two checkboxes do not get confused by this. Therefore switching mount point and device may be useful.



Pic: Rearranged items, with example below „device“.

1.5 Windows File Sharing

If the user want to add a new smb share, the dialog has some pitfalls.



Pic: Dialog after canceling a „browse“ dialog.

1.5.1 If the user clicks „browse“ for the network share, and cancels the next dialog, the line edit now sais „\\←device→“ instead of „←device→“ (bug).

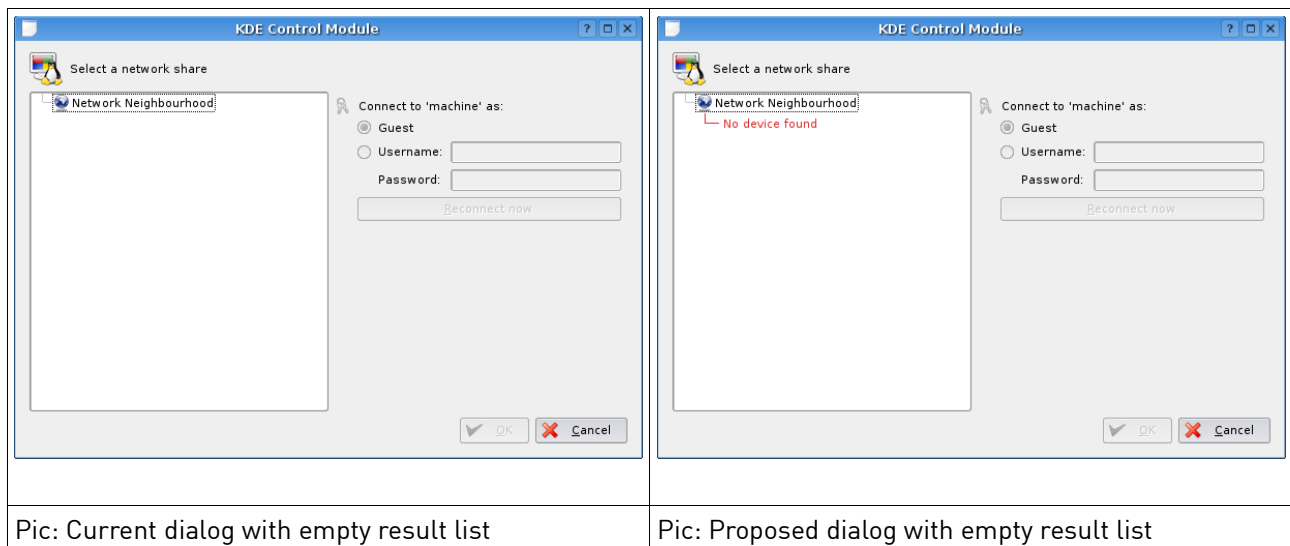
1.5.2 The option „writable“ should be below „Enable at start up“, as in the other dialogs.

1.5.3 Authorization settings can be entered on the main dialog and on the „browse“ dialog for the network share. It does not become clear how they are connected (overwritten?).

1.5.4 The „Security and Safety Settings“ are confusing and not clear for non-administrators. They could be placed within the „Advanced“ dialog. But then, this smb dialog is inconsistent to the other dialogs. No solution yet.

1.5.5 The label „Enable at Start Time“ should be rephrased in „Enable at system start“. This should be done for all dialogs equally.

1.5.6 If a result list is empty, this should be clearly indicated, like „no devices found“.

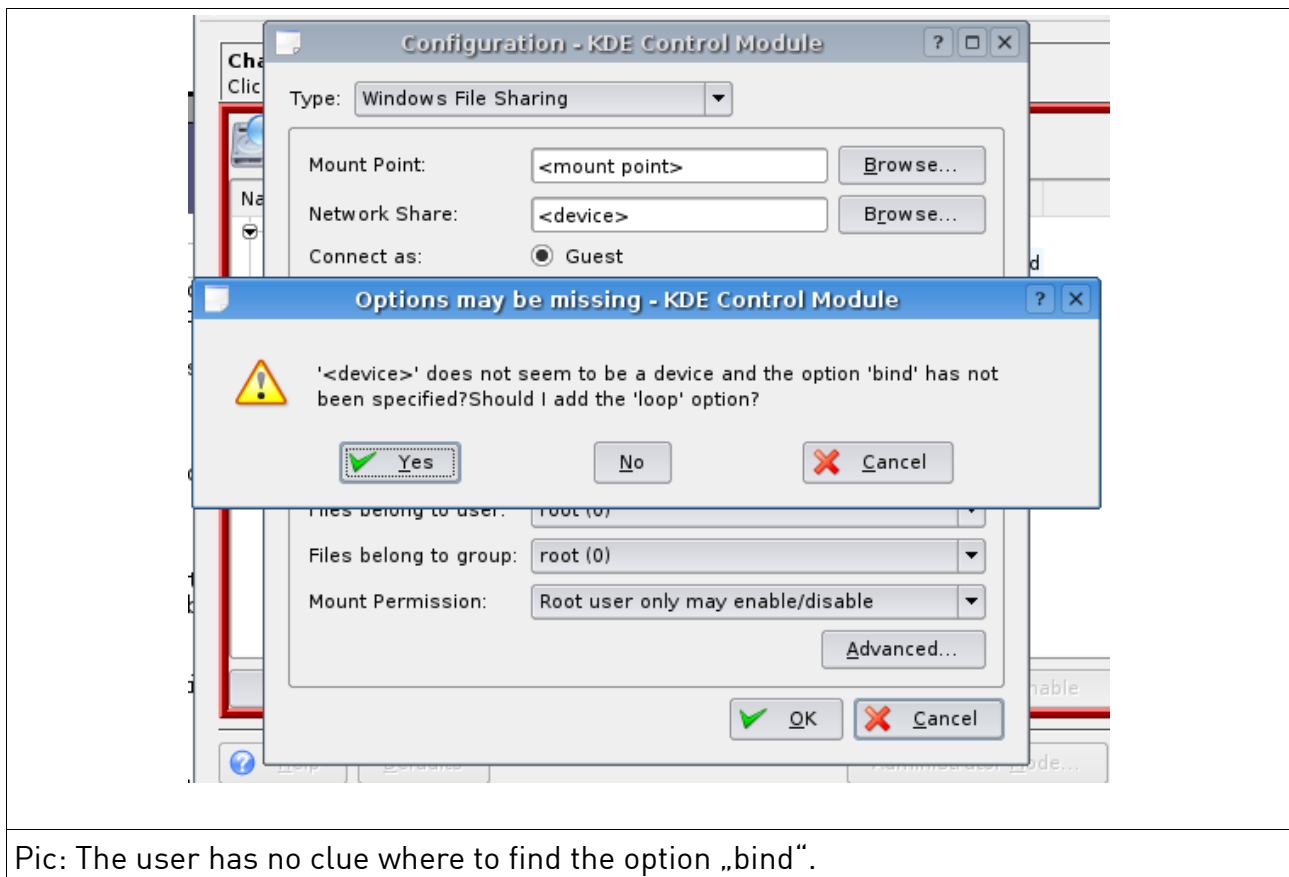


1.5.7 Using the browse-dialog for network shares, the user gets no feedback if the system is still scanning and when the list is final. This also includes a missing „rescan option“.

Recommendation:

Integrate a busy icon, in the kde style, and place a „rescan“ button.

1.5.8 If the user confirms the main dialog with „ok“, but some settings are missing, the error message should indicate where those settings can be done, e.g. in the advanced menu. Besides, this error message is still very good since it offers a solution, although in this case it won't fix the problem.



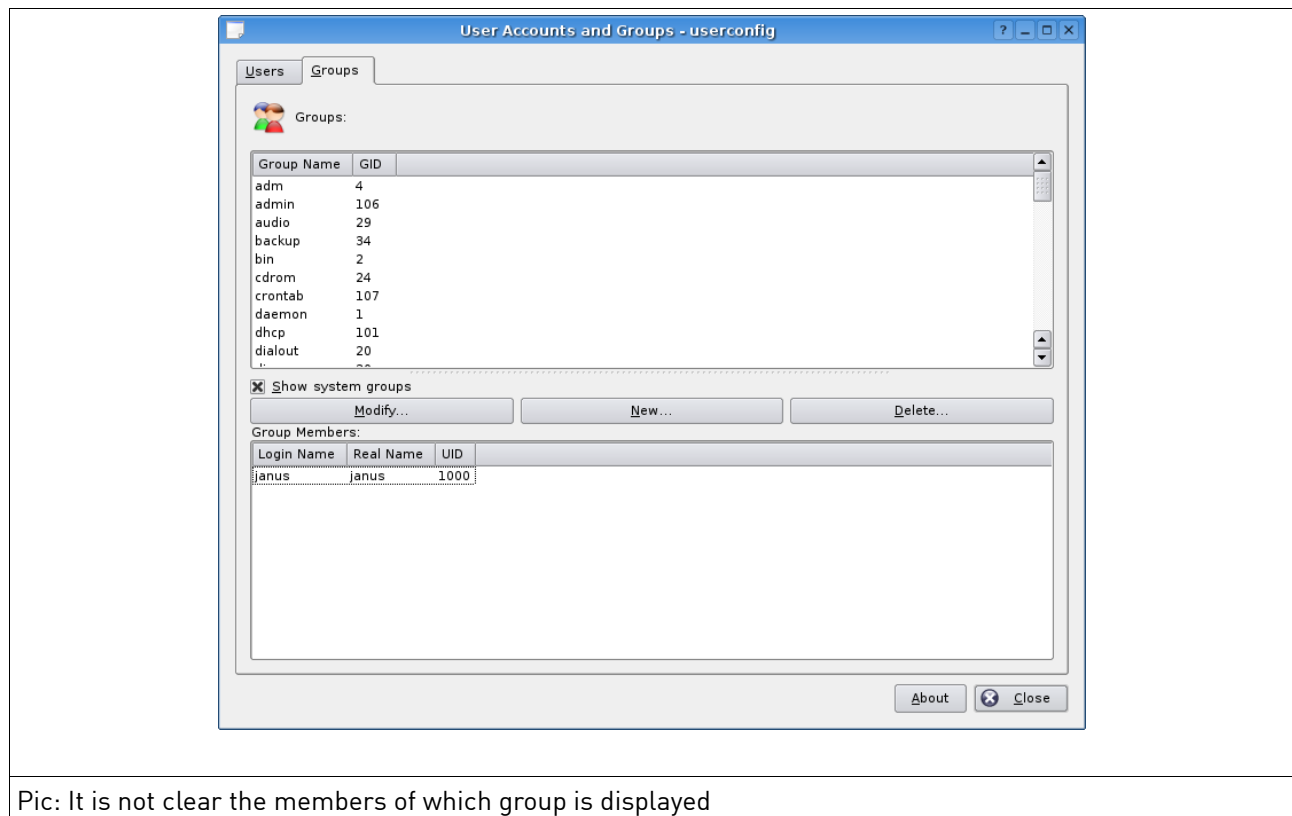
Pic: The user has no clue where to find the option „bind“.

1.5.9 The „Browse Button“ should be labelled „Scan“ (as in Kprinter). Else, the same button label is used for two different actions/behaviors.

2. Userconfig

2.1 Selected Group

If the user selects a group, in the lower list the group members are displayed. However, beside the selection mark, it is not clear which group is displayed.



Recommendation

Put the group name in the heading for the lower list box: „Group [Groupname]: Members“. Additionally, consider keeping the marked group visible even if the checkbox „Show system groups“ is checked.

2.2 Adding members to groups

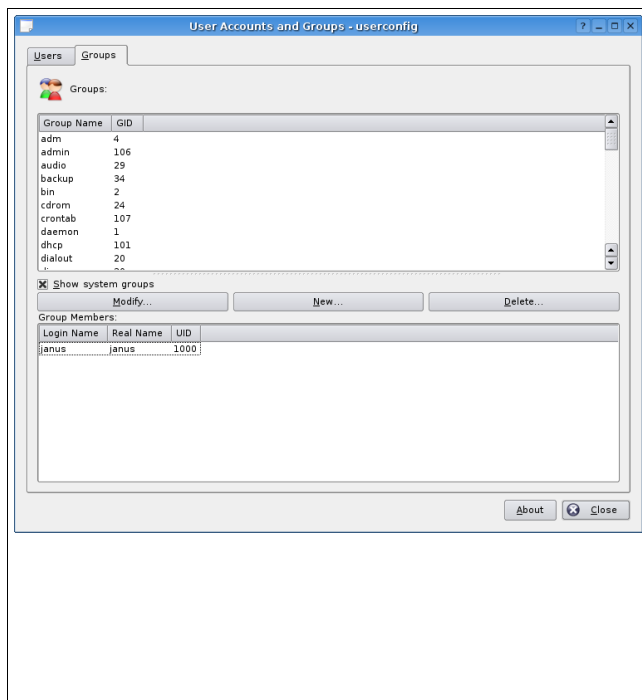
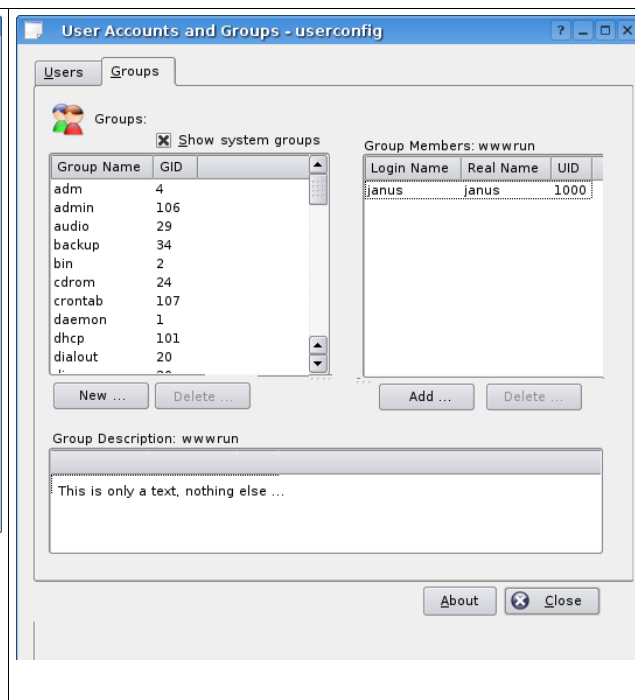
It is not obvious how users can be added to groups. The way the system provides is through „modify“, although it would rather be expected in „Group Members“, at least as an additional option.

Recommendation

Enable RMB menu with the entries „Modify“, „Delete“ and „New“.

2.3 Alternative Layout for groups

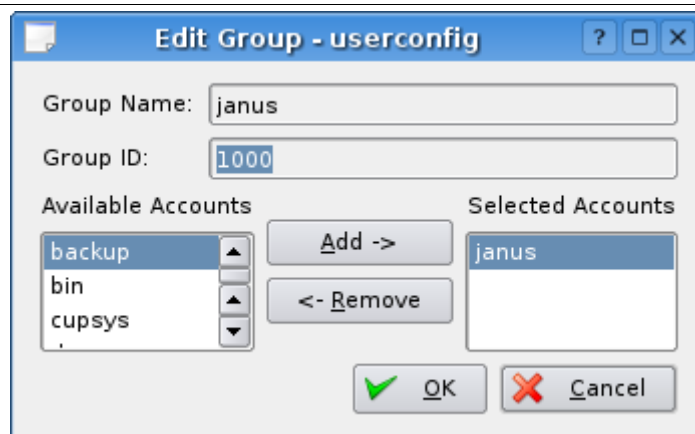
The layout for the groups, which is mainly for adding and deleting members, is suboptimal, because it wastes a lot of screen estate and is separated by a button group that does not clearly indicate to which the belong.

	
<p>Pic: Current group config</p>	<p>Pic: Proposed alternative group config (mockup). Checkbox for system groups may be placed between list and buttons.</p>

2.4 Add dialog groups

2.4.1 The add dialog for the group membership should use the label „Availabe Users“ and „Selected Users“ instead of „... Acounts“.

2.4.2 The line edit for group id is marked, but not editable. It should therefore not be marked.

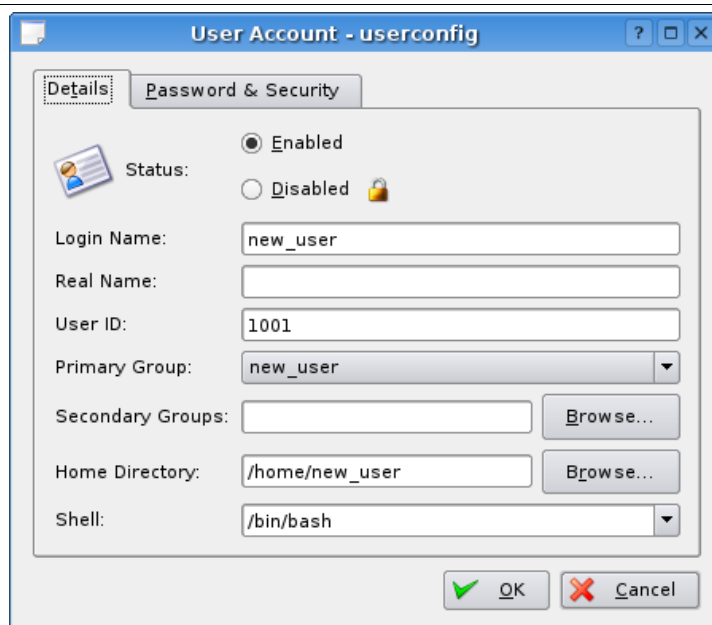


Pic: „Users“ instead of „Accounts“, Group ID should not be marked.

2.5 New Users

2.5.1 „Browse“ Button

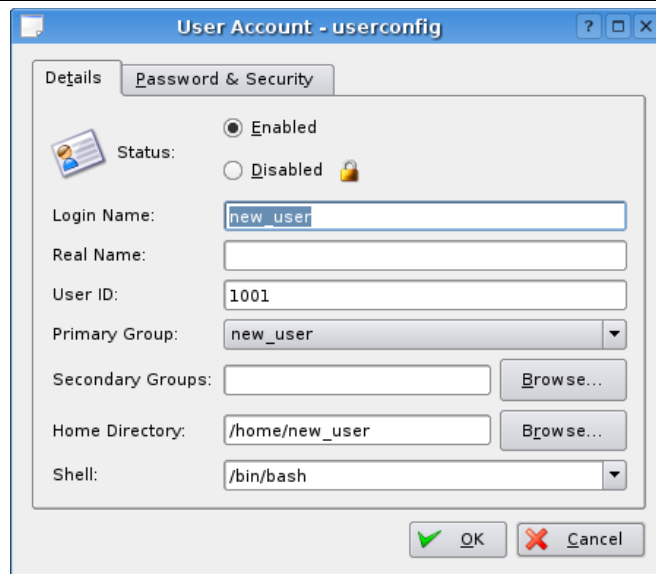
The „Browse“ button should be renamed to „Select ...“ to make a difference to the file browse button below.



Pic: Same labels for different actions on buttons.

2.5.2 Default Focus

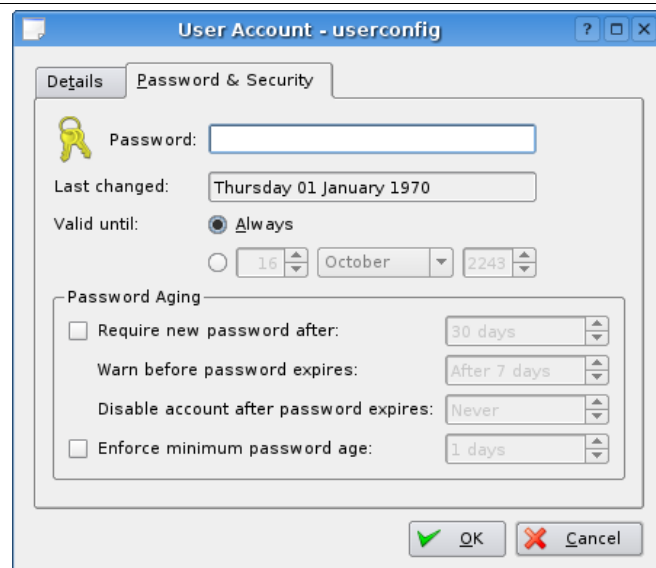
When the dialog is invoked, the line edit „Login Name“ should be marked and have the focus, since the most typical first action in this situation is to enter a login name. Currently, the shell dropdown has the focus.



Pic: Proposed marked and focused line edit: „Login Name“

2.5.3 Password&Security

This dialog is rather confusing.



Pic: This dialog is strange

First, the password should be entered twice for security reasons. Second, the „Last

changed“ date is confusing for a new user. Third, the „Password Aging“ is very confusing, especially the relation to „Valid until“ above.

Recommendations

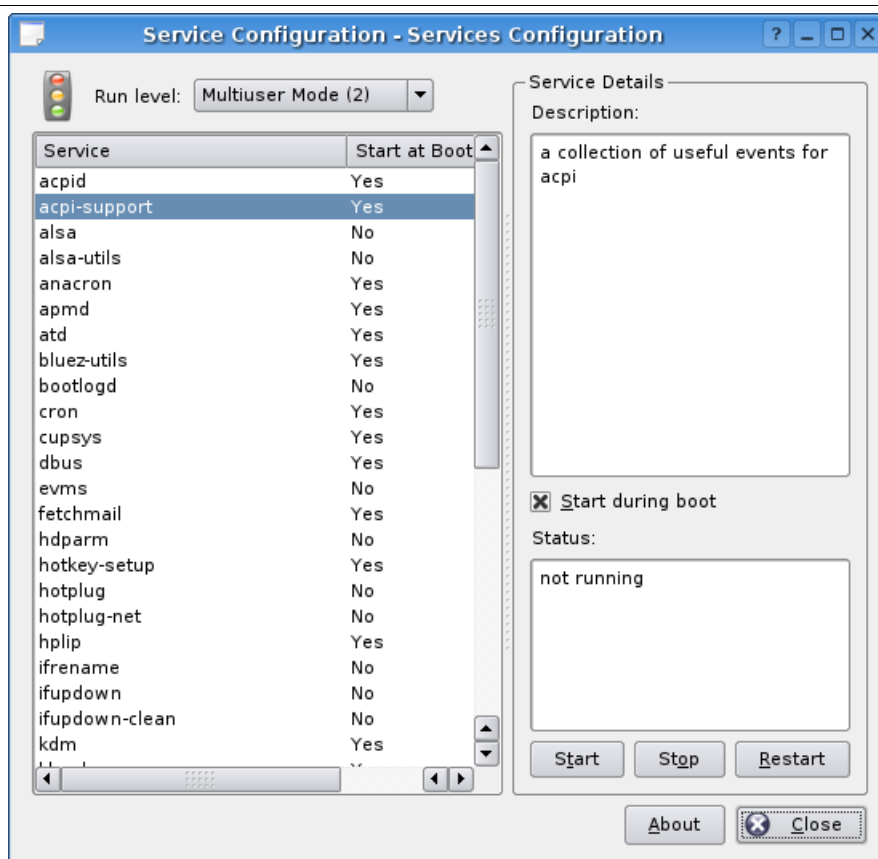
1. Two line edits for password (+ = repeat password).
2. „Last changed“ should be blank for new users.
3. All further settings should be placed in an „advanced“ menu.

3. Displayconfig (not available)

4. Serviceconfig

4.1 RMB menu

The RMB menu should provide the entries „Start“, „Stop“ and „Restart“. Currently, it does not provide any RMB functionality.



Pic: Serviceconfig

4.2 Order in right column

The input elements in the right column should be in the following order „Description“, „Status“ and „Start during boot“.

4.3 Checkbox feedback

When the user checks or unchecks the checkbox „Start during boot“, the corresponding entry in the list on the left side is updated (e.g. from „yes“ to „no“). This is hard to notice, since the mental focus is on the checkbox, not on the list. Therefore, a stronger visual indication about the change is helpful.

Recommendation

Give a strong visual clue or feedback that the corresponding value in the has changed, e.g. be quickly changing the text to „yes“ or „no“, using capitals or a bold type for a second, then changing to normal font. Additional red color is also useful, but has accessibility limitations.

4.4 Refresh

If the service is started or stopped, the status should be visible in the list. Therefore, the list should be refreshed either by a kernel directory notification, or after a button event.

4.5 Double-Click

It is not clear what happens (or should happen) if a user doubleclicks on an entry in the list. This must be defined system wide, i.e. in the HIG guidelines.